



Sky Seven Infratech Pvt. Ltd.
(Synnove Group)

SYNNOVE ATMOSPHERE

Synnove Atmosphere,
Opp. Vadodara Cricket Association,
TP-2, Sevasi, Vadodara - 391 101

CORPORATE OFFICE

24, Mtr. Vasna Bhayli Main Road, Opp. Shakti Green Party Plot,
Next to Vadodara Cricket Academy,
Before Bright Day School, Vadodara - 391410

✉ synnove.atmosphere@gmail.com

🌐 www.sky7infratech.com

☎ 9313924772 / 9313924771
7043334206 / 9998981001

Disclaimer:
The information contained in this brochure is subject to change as may be approved by the competent authorities and cannot form part of any form or contract. All plans are subject to any amendments approved by the competent authorities. This brochure shall not be treated as a legal document; it is only for the purpose of information. The areas are indicative only. The measurements indicated in the plan may vary at the time of construction. All landscaping is conceptual and shall be as per architect's design. Illustrations in this brochure are artist impressions and serve only to give an approximate idea of the project. While every reasonable care has been taken in providing this information, the developers cannot be held responsible for any inaccuracy. The developers reserve all the rights to make any changes as may be necessitated from time to time in the layout, building plan and specifications without any prior notice. Such changes would be binding to all members.



ARCHITECT
UNEVEN (uneven.in)

STRUCTURAL CONSULTANT
Zama Associates

PLUMBING CONSULTANT
KRUPALU CONSULTANT
PINAAN PATEL

ELECTRICAL CONSULTANT
ORIENTAL ELECTRICALS ENGINEERS
DAXESH DAVE

CREATIVE
DESIGN



ATMOSPHERE

4 BHK LUXURIOUS PENTHOUSES
3 BHK LUXURIOUS APARTMENTS
HIGH STREET COMMERCIAL



"A New way of life"



Sky Seven Infratech Pvt. Ltd.
(Synnove Group)



Sky Seven Infratech Pvt. Ltd. (Synnove Group)

Sky 7 has a clear strategy of using its collective skills and understanding of markets to develop a unique value proposition to clients

Since 2006 we were just Skyline Developers, but in 2011 we got named 'Sky Seven Infratech Pvt Ltd'. Sky has during 16 years history developed into Gujarat's leading Real Estate Construction company. It has evolved to being a diversified construction, infrastructure concessions and services group with an established and growing client base engaged infrastructure delivery.

Sky 7's Business approach is enclosed its positioning statement "A gift from the sun".

The word "Gift" Indicates a special ability, natural endowment to deliver products and services according to tested methodology.

The word "Sun" reflects the group's spirit of meeting unbounded challenges as a self-luminous heavenly body with innovative solutions.

Our Excellence/ Experience :

At the heart of our business is a team of architects , structural engineers, landscape designers, environmental and electrical consultants, each renowned for their high standards.

Sky Seven Infratech group has proved its worth for almost a decade in residential dwelling, commercial complexes and heavy engineering industrial projects.

Together we have chosen to create happy dwellings for a lifetime of happiness, security and bliss!



Sky Seven Infratech Pvt. Ltd. (Synnove Group)

A group, dedicated towards society, with committed strategic vision and a mission for a better lifestyle for today and tomorrow

- Maintain highest standard of quality on every project.
- Complete projects within budget and on-time.
- Exceed our client's expectations.

Our Completed Projects [Since 2006]

- Sarathi Bunglows
- Skyline Synnove
- Synnove Enclave
- Synnove Palladium

Our Ongoing Projects

- Synnove The Emperor
- Synnove Patalials

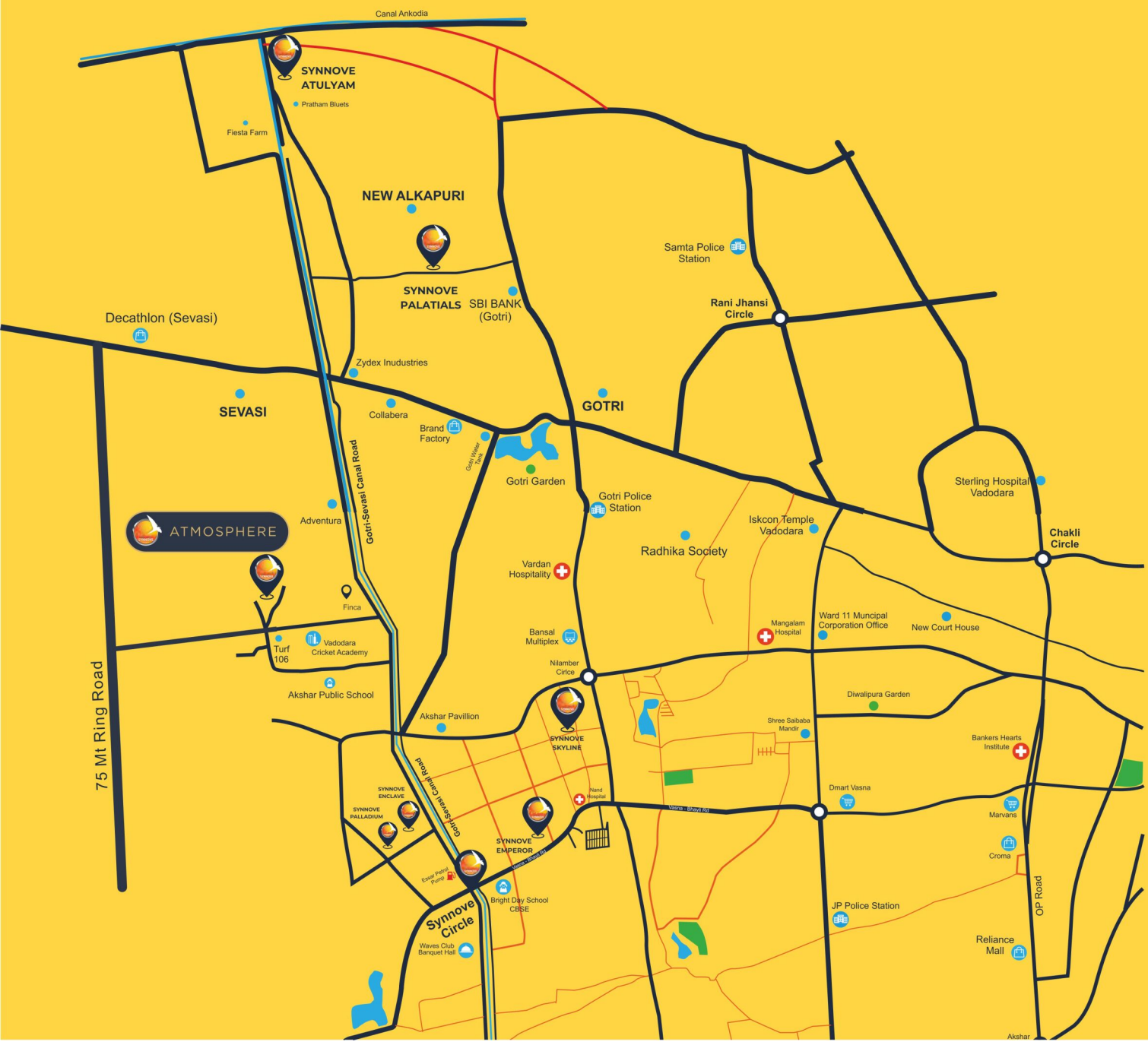
Our Future Projects

- Synnove Atulyam

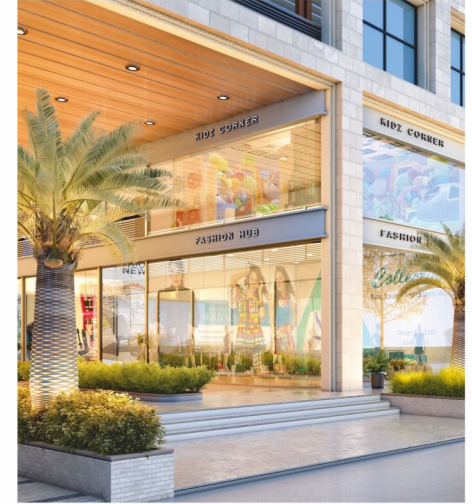


Performance & Achievements
Continuous...

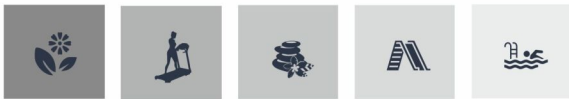
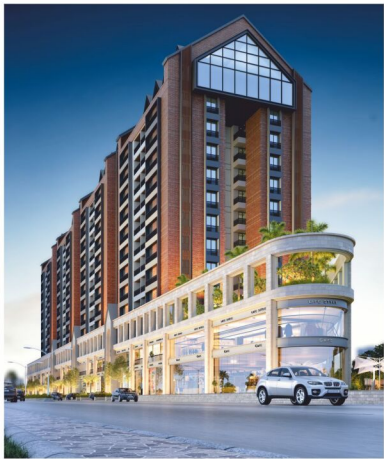
THE INCREDIBLE LOCATION







Live the Good Life



Truly

Inspired Living

Luxury . Location . Convenience

IN A WORLD FULL OF *Promises*

WE BELIEVE IN *Delivering*



A LANDMARK AS YOUR
NEW ADDRESS

Atmosphere is an unmatched blend of modesty and elegance in aesthetically beautiful apartments. The landscaping design of the project is focused on the functionality of spaces. Soothing to the senses, this hanging piece of greens will be an excellent rejuvenation desk besides offering a great view of the skyline.

A living space made to provide you refined comfort and security, make Atmosphere and address that defines you.

COMMON *Facilities*

SECURITY

- CCTV Installed in all Common Areas
- Intercom

INFRASTRUCTURE

- Alloted Basement Parking for Flat Owners
- Water Softener Plant
- Underground Water Tanks
- CCTV & Wifi Enabled Campus
- Power Backup for common Areas
- High Speed Elevators

SPECIFICATION FOR *Residential*

Flooring/Dado/Kitchen Platform/Sill as per architects design

- 4' x 2' Vitrified flooring in all rooms
- 4' X 2' Vitrified tile full high dado in bathrooms
- 2' X 2' anti-skid floor tiles in bathrooms
- Granite kitchen platform with Ceramic tile dado up to lintel level
- Composite Marble stone in window sills.

Doors and Windows

- Main Door - Veneer finish flush door with wooden door frames
- Internal Doors - Laminate finish flush door with granite frame
- Windows - Premium quality powder Coated Aluminium section and Glass as per elevation

Plumbing and Sanitation

- Standard quality pipes and fittings from Astral, Finolex or equivalent brand Sanitary fittings and fixtures of jaguar or equivalent brand

Electrification

- Sufficient electrical/TV/Telephone points as per Modern days requirement
- Standard quality wires from Finolex, Polycab, RR Kabel or equivalent brand
- Premium quality accessories

Railings

- SS/Aluminium and glass combination balcony railings as per design
- SS railing on Common staircase



Paints/Textures

- Internal walls will be finished with putty of standard quality
- External walls painted with premium quality exterior emulsion paint with texture finish from asian paints or equivalent brand

Elevators

- Elevators with floor intercom from Schindler / Kone or equivalent brand

SPECIFICATION FOR *Commercial*

Flooring

- 1 mtr.X 1 mtr. Vitrified tile flooring in all shops / showrooms
- 4' x 2' Vitrified tile flooring in common areas

Shutter / Doors

- All showrooms/shops front in glass partition with glass doors

Plumbing and Sanitation

- Plumbing and drainage points for toilet provision in each shop

Electrification

- Sufficient electrical/TV/Telephone points as per Modern days requirement
- Standard quality wires from Finolex, Polycab, RR Kabel or equivalent brand
- Premium quality accessories

Railings

- SS/Aluminium and glass combination balcony railings as per design
- SS railing on Common staircase

Paints/Textures

- Internal walls will be finished with putty of emulsion paint from Asian paints or equivalent brand
- External walls painted with premium quality exterior emulsion paint with texture finish from asian paints or equivalent brand



TRANSFORMING SHOPPING INTO EXPERIENCE

This Premium High Street commercial complex comprises of the best brands that will take care of all your needs and necessities to help you upgrade your lifestyle. The shopping destination will offer food joints, essentials and all need-based services. Discover the difference and find yourself in the place of choices with this gateway.

SO MUCH TO *Celebrate*

COME HOME TO *Fine Living*
COME HOME TO ATMOSPHERE



THE
ARRIVAL ZONE

- GARDEN
- BANQUET HALL
- WIFI ENABLED CAMPUS
- LIBRARY / CAFETERIA
- GUEST ROOM



THE
FITNESS ZONE

- GYM
- SWIMMING POOL



THE
PLAY ZONE

- INDOOR GAMES / DART ROOM
- KIDS PLAY ROOM
- TABLE TENNIS
- SNOOKER



THE
RELAXATION ZONE

- YOGA / MEDITATION HALL
- SPA / MASSAGE / STEAM



1ST FLOOR PLAN

18 MTR WIDE ROAD





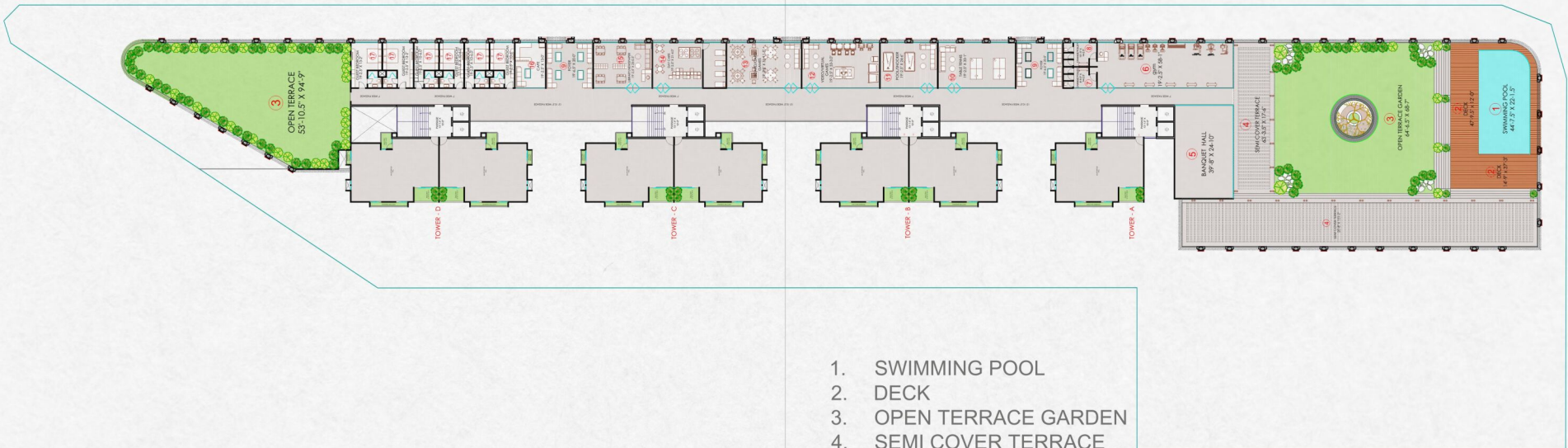
PENTHOUSES

Our 4 BHK Penthouses define luxury at its best with an entertainment room. Also the huge open terrace gives an alluring view around, allowing you to sit back-relax and feel the essence of life outdoors

- 4 BHK Luxurious Penthouses
- 11 Feet Ceiling Height
- Terrace Garden

2ND FLOOR PLAN

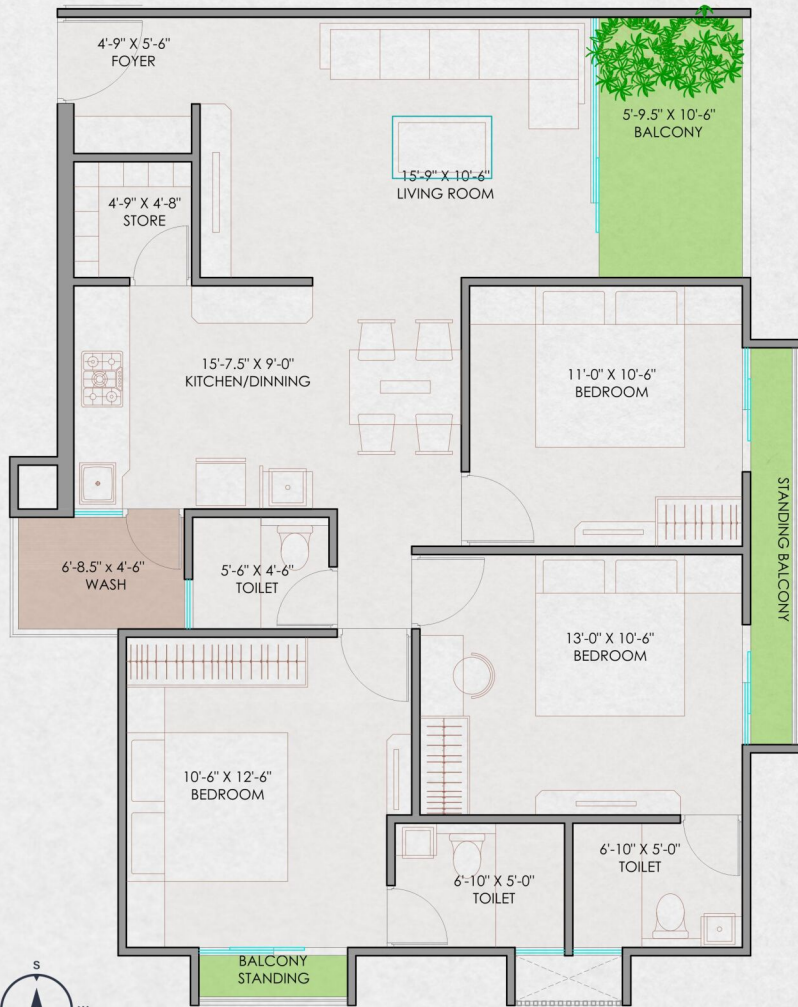
18 MTR WIDE ROAD



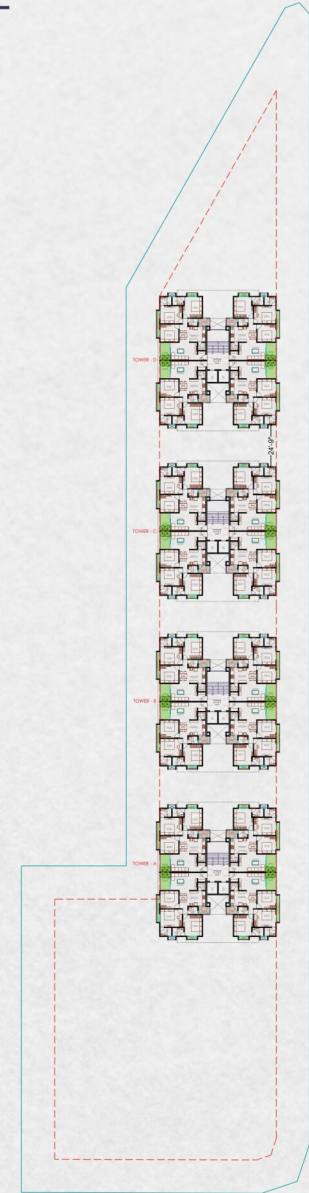
1. SWIMMING POOL
2. DECK
3. OPEN TERRACE GARDEN
4. SEMI COVER TERRACE
5. BANQUET HALL
6. GYM
7. HIS TOILET BLOCK
8. HER TOILET BLOCK
9. FOYER
10. TABLE TENNIS
11. POOL/SNOOKER
12. VIDEO / VIRTUAL GAMES
13. BOARD /CARD GAMES
14. DAY CARE
15. LIBRARY / NEWSPAPER
16. CAFE
17. GUEST ROOM



3 BHK APARTMENTS



3RD FLOOR TO 11TH FLOOR





A SYMPHONY OF
COMFORT
AND
WELL-BEING

Welcome to **ATMOSPHERE**

This premium High Street Commercial and Residential Hub with basement parking is located in the most developing area of the city. With all ultra modern amenities- you name it and we have it - Thus called " ATMOSPHERE ".

Atmosphere symbolises a new life. Complete with compassion, that naturally creates a positive environment with Luxury and Lifestyle living. A perfect home below the clouds and the thought of being in paradise, it promises you Luxurious Flats and Penthouses, rich in style, space and personal appeal. Atmosphere will be more than your home, it shall be the foundation for your life, where you can wash away all your stress & fatigue of everyday life.

 **3 BHK**
Luxurious Apartments

 **4 BHK**
Luxurious Penthouses

 Showrooms





POOL VIEW

The serene and harmony of ATMOSPHERE would make the surroundings even more charming and elegant. The beauty of this project is defined by the luxury elements of outdoor swimming pool, which creates a subtle relaxation of opulence and comfort. Each element is designed in accordance with nature to give a feeling of luxury, richness and pleasure.